

How to Size Power Vents?

Power vents are rated in CFM – cubic feet of air moved per minute. The higher the CFM, the more powerful the vent and the more air exchanges per hour it provides. To determine the minimum CFM required, multiply the attic square footage by 0.7. For example:

1500 square feet x 0.7 = 1050 CFM
Thus, a fan rated at least 1050 CFM is needed.

How Much Intake Ventilation?

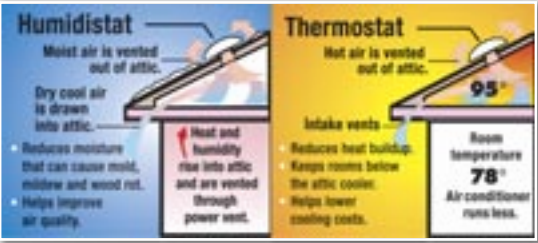
Just like any exhaust vent, power vents need intake airflow to perform properly. To calculate how much intake the power vent needs, simply divide the fan’s CFM capacity by 300 and then convert that number to square inches.

CFM of Power Vent / 300 = Sq. ft. of intake net free area needed x 144 = Sq. in. of intake net free area needed
Example: 1050 CFM / 300 = 3.5 sq. ft. of intake net free area needed x 144 = 504 sq. in. of intake net free area needed

Why a Humidistat?



A typical family of four produces an average of 2 to 4 gallons of water vapor per day in a home. In the winter, this vapor is attracted to the cooler air in the attic, where it quickly condenses. Condensation can drip onto attic insulation, reducing its effectiveness. This moisture can cause wood rot to the attic structure and promote the growth of mold and mildew, affecting the quality of the air in the home. So, for added protection, install a power vent equipped with a humidistat.



Air Vent Intake Vents

Product	Model	Description	Colors	Size	Net Free Area
The Edge Vent	EVI	Shingle-over, roof-top installed	Black	4'	9 sq. in. per ft.
Vented Drip Edge	VDE	Aluminum	White, Mill, Brown, Black	10'	9 sq. in. per ft.
Continuous Soffit Vent	SV201	Louvered Aluminum Continuous soffit vent (Retrofit)	White, Mill, Brown	8'	9 sq. in. per ft.
	SV202	Louvered Aluminum Continuous soffit vent (New construction)	White, Mill, Brown	8'	9 sq. in. per ft.
Undereave Vents	EV16424	Aluminum	White, Mill, Brown	4" x 16"	28" pc
	EV16624	Aluminum	White, Mill, Brown	6" x 16"	42" pc
	EV16824	Aluminum	White, Mill, Brown	8" x 16"	56" pc

Roof-Mount Models

Product	CFM	Colors	Attic Size
Model HE15 with variable speed motor and thermostat/humidistat	1500	Weatherwood	2,100 sq. ft.
Model ASRHP with automatic thermostat/humidistat	1500	Gray, Brown, Black, Weatherwood	2,100 sq. ft.
Model SV3000 with automatic thermostat	1500	Brown, Weatherwood	2,100 sq. ft.
Model PC12 with automatic thermostat/humidistat	1170	Gray, Brown, Black, Weatherwood	1,650 sq. ft.
Model RV28 with automatic thermostat	1320	Gray, Weatherwood	1,900 sq. ft.
Model RV26 with automatic thermostat	1170	Steel: Gray, Brown, Black, Weatherwood Plastic: Gray	1,650 sq.ft.

SolarCool SC8BL with 10-watt solar panel	800	Black	1,200 sq. ft.
SolarCool NPSP8WW with separate 10-watt solar panel	800	Weatherwood	1,200 sq. ft.

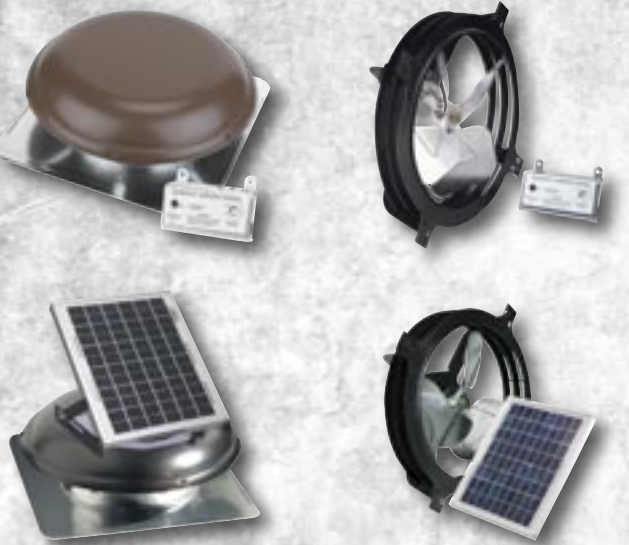
Gable-Mount Models

Product	CFM	Attic Size
APGH with automatic thermostat/humidistat	1620	2,300 sq. ft.
APG with automatic thermostat	1620	2,300 sq. ft.
WCGB with automatic thermostat	1320	1,900 sq. ft.
WCGA with automatic thermostat	1050	1,500 sq. ft.

NPSP8 with 10-watt solar panel	800	1,200 sq. ft.
--------------------------------	-----	---------------

Air Vent Power Vents

Quality-Built, Efficient Fans from the Industry Leader in Attic Ventilation



REPLACEMENT PLUS™ PROTECTION

Replacement Plus provides reimbursement for all labor costs incurred in removing any defective vent and installing the vent replacement, in addition to the replacement product itself.



Get Our APP!

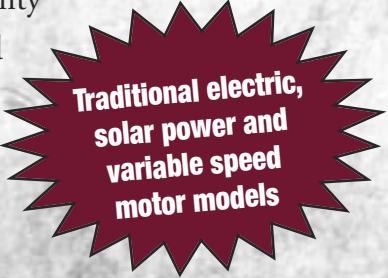


4117 Pinnacle Point Drive, Suite 400, Dallas, Texas 75211
1-800-AIR-VENT (247-8368)
www.airvent.com • ventilation@gibraltar1.com



A GIBALTAR INDUSTRIES COMPANY
AVI063-12/19
©2019 Air Vent, Inc.

- Reduce energy costs
- Help eliminate damaging moisture
- Improve air quality
- Extend roof and shingle life



ELECTRIC POWER VENTS

Electric power attic ventilators are controlled by a factory pre-wired thermostat and/or a humidistat to ensure effective ventilation as needed. They deliver cooling results faster than wind turbines and roof louvers. Power vents are available for both roof- and gable-mount applications. Roof-mount power vents are ideal for hard-to-vent hip roof applications.

ROOF-MOUNT



MODEL HE15 with variable speed motor and automatic Thermostat/Humidistat

- 1500 CFM for attics up to 2,100 square feet
 - Variable speed motor adjusts to the conditions in the attic
 - Less electricity consumption (up to 74%) vs. traditional motors
 - Limited Lifetime Warranty includes 5-year Replacement Plus™ protection¹
 - Requires 720 square inches of intake vents²
- Dome colors available:** Weatherwood



MODEL ASRHP with Automatic Thermostat/Humidistat

- 1500 CFM for attics up to 2,100 square feet
 - Heavy-duty, rust-resistant steel dome
 - Limited Lifetime Warranty includes 5-year Replacement Plus™ protection¹
 - Requires 720 square inches of intake vents²
- Dome colors available:** Gray, Brown, Black and Weatherwood



MODEL SV3000 with Automatic Thermostat

- 1500 CFM for attics up to 2,100 square feet
 - Heavy-duty, rust-resistant steel dome
 - Limited Lifetime Warranty includes 5-year Replacement Plus™ protection¹
 - Requires 720 square inches of intake vents²
- Dome colors available:** Brown and Weatherwood



MODEL PC12 with Automatic Thermostat/Humidistat

- 1170 CFM for attics up to 1,650 square feet
 - Heavy-duty, rust-resistant steel dome
 - 10-year Limited Warranty includes 5-year Replacement Plus™ protection¹
 - Requires 562 square inches of intake vents²
- Dome colors available:** Gray, Brown, Black and Weatherwood



MODEL RV28 with Automatic Thermostat

- 1320 CFM for attics up to 1,900 square feet
 - Heavy-duty, rust-resistant steel dome
 - 10-year Limited Warranty includes 5-year Replacement Plus™ protection¹
 - Requires 634 square inches of intake vents²
- Dome colors available:** Gray and Weatherwood



MODEL RV26 with Automatic Thermostat

- 1170 CFM for attics up to 1,650 square feet
 - Plastic or heavy-duty, rust-resistant steel dome
 - 10-year Limited Warranty includes 5-year Replacement Plus™ protection¹
 - Requires 562 square inches of intake vents²
- Steel dome colors available:** Gray, Brown, Black and Weatherwood
Plastic dome color available: Gray



BUILT-IN QUALITY

The quality that's built into every power vent:



- 1 Pre-painted 22-gauge galvanized steel dome is more durable than aluminum. Screws are painted to match dome color.
- 2 Raised dome for greater airflow and easier flashing.
- 3 Plastic screen has distinct advantages over metal: it won't corrode or rust and it won't rattle or create noise.
- 4 Six brace struts hold dome firmly in place.
- 5 Oversized 24" x 24" G-90 galvanized base flange for easy nailing and flashing.
- 6 Stiffening rib improves edge sealing and adds rigidity.

GABLE-MOUNT



Air Vent's gable-mount power vents feature a fan blade encased in a series of rings – not a cylinder like standard units. This open ring configuration allows the motor to move air 35% more efficiently with fewer restrictions and operate 30% quieter than comparable units. A shutter (Model SHT15W, sold separately) opens automatically when the fan turns on to allow the unit to exhaust efficiently. The shutter can be painted to match the home's exterior.

Model APGH with Automatic Thermostat/Humidistat

- 1620 CFM for attics up to 2,300 square feet
- Limited Lifetime Warranty includes 5-year Replacement Plus™ protection¹
- Requires 778 square inches of intake vents²
- Use with shutter Model SHT15W for optimum performance



Model APG with Automatic Thermostat

- 1620 CFM for attics up to 2,300 square feet
- Limited Lifetime Warranty includes 5-year Replacement Plus™ protection¹
- Requires 778 square inches of intake vents²
- Use with shutter Model SHT15W for optimum performance



Model WCGB with Automatic Thermostat

- 1320 CFM for attics up to 1,900 square feet
- 10-year Limited Warranty includes 5-year Replacement Plus™ protection¹
- Requires 634 square inches of intake vents²
- Use with shutter Model SHT15W for optimum performance



Model WCGA with Automatic Thermostat

- 1050 CFM for attics up to 1,500 square feet
- 5-year Limited Warranty includes 2-year Replacement Plus™ protection¹
- Requires 504 square inches of intake vents²
- Use with shutter Model SHT15W for optimum performance



¹See airvent.com for warranty details.

²Air Vent's full line of intake vents are listed on the back of this brochure.

SOLAR POWER VENTS

Roof-mount and gable-mount solar power vents are an exciting alternative to traditional electric power fans.



ROOF-MOUNT



SOLARCOOL™ Model SC8BL with 10-watt solar panel

- Up to 800 CFM under direct sunlight for attics up to 1,200 square feet
- Pre-painted galvanized steel dome; black
- Solar panel can be tilted and rotated for maximum sun exposure
- Solar panel is wind, hail and impact resistant
- 5-year Limited Warranty includes 2-year Replacement Plus™ protection¹
- Requires 384 square inches of intake vents²



Model NPSP8WW with separate 10-watt solar panel

- Up to 800 CFM under direct sunlight for attics up to 1,200 square feet
- Pre-painted galvanized steel dome; weatherwood
- Solar panel installs separate on the roof
- Wind, hail and impact resistant solar panel
- 5-year Limited Warranty includes 2-year Replacement Plus™ protection¹
- Requires 384 square inches of intake vents²

GABLE-MOUNT



Model NPSG8 with 10-watt solar panel

- Up to 800 CFM under direct sunlight for attics up to 1,200 square feet
- Solar panel mounts directly over the shingles
- Wind, hail and impact resistant solar panel
- 5-year Limited Warranty includes 2-year Replacement Plus™ protection¹
- Requires 384 square inches of intake vents²