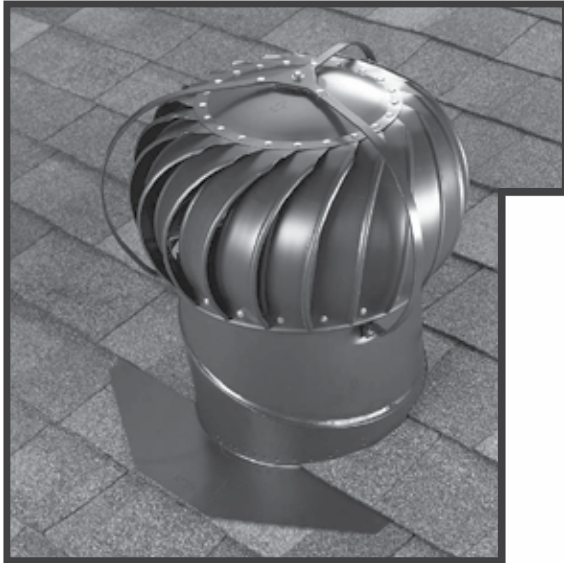




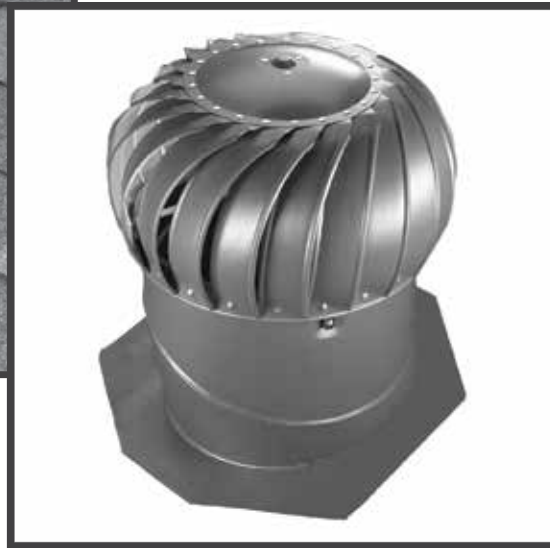
# AIR VENT INC.

A GIBRALTAR INDUSTRIES COMPANY

## TURBINES



TESTED TO WITHSTAND 110 MPH WINDS



### 12" Internal Brace & External Brace

- NFA 95 sq. in./unit
- 12" round opening for optimal airflow

### 14" Internal Brace & External Brace

- NFA: 132 sq. in./unit
- 14" round opening for optimal airflow



### Octagon shaped carton:

- better protects turbine
- includes roof pitch finder

### TURBINE INTERNAL FACTS:

- Maintenance-free top & bottom dual bearing system
- Heavy-duty polypropylene bracing system
  - rust-free
  - better performance
  - longer-lasting than metal bracing
  - internal spider adds stability

### PRODUCT FEATURES:

- All aluminum construction
- 21 vanes, all riveted top and bottom
- Adjustable base up to 12/12 roof pitch
- Durable prepainted finish in five color choices:
  - Mill
  - Black
  - Brown
  - White
  - Weatherwood
- Large sturdy flange holds turbine securely to roof
- Limited lifetime warranty



4117 Pinnacle Point Dr., Suite 400

Dallas, TX 75211

800-AIR-VENT (247-8368)

www.airvent.com • ventilation@gibraltar1.com

