

VENTURIVENT™ PLUS

takes ridge ventilation
to a new level of performance.

The external baffle maximizes airflow performance and protects the attic from weather infiltration. And, VenturiVent Plus is designed for ease of installation. Compare the advanced design features of VenturiVent Plus to other ridge vents and you'll be convinced that VenturiVent Plus is one of the best ridge vents you can install for performance on the roof and on the job site.



The low-profile, shingle-over look of VenturiVent Plus creates a clean, uncluttered roofline. Yet it performs better than other roof vent products which are a lot more obtrusive.

INTAKE VENTILATION FOR A BALANCED SYSTEM

Essential for air intake and the key to a proper ridge vent exhaust system design. Air Vent offers a number of quality, durable and versatile eave-mounted vents.



UNDER EAVE VENTS

Aluminum, available in mill, white or brown.



CONTINUOUS SOFFIT VENTS

Vinyl or Aluminum, available in mill, white or brown. Provides 9 square inches of net free area per linear foot.



PRO FLOW™ VENTED DRIP EDGE

Designed for homes without soffit. Provides 9 square inches of net free area per linear foot.



4117 Pinnacle Point Drive, Suite 400, Dallas, TX 75211

800-AIR-VENT (247-8368)

www.airvent.com • ventilation@gibraltar1.com

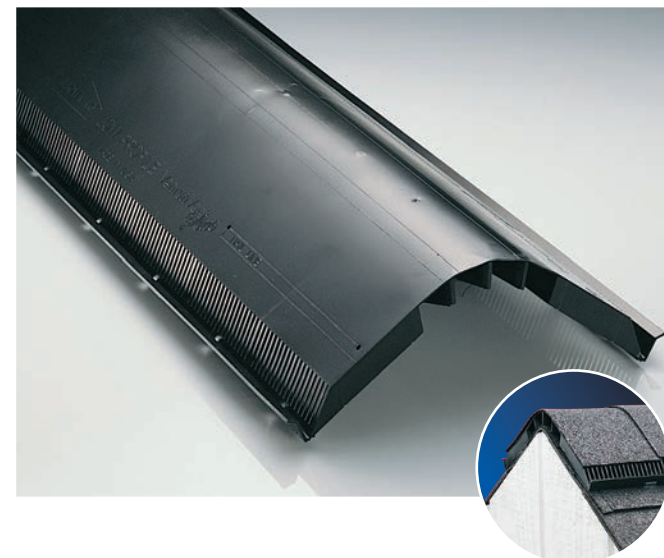
© 2016 Air Vent, Inc.



AVI017R - 7/16



VENTURIVENT™ PLUS SHINGLE-OVER RIDGE VENT



VENTURIVENT PLUS

shingle-over ridge vent

provides 18 square

inches of net free

area per linear foot

and has a limited

lifetime warranty.



Get Our APP!



IN ADDITION TO ITS ADVANCED DESIGN, VENTURIVENT™ PLUS INCORPORATES THESE SOPHISTICATED FEATURES TO ENSURE QUALITY INSTALLATION.

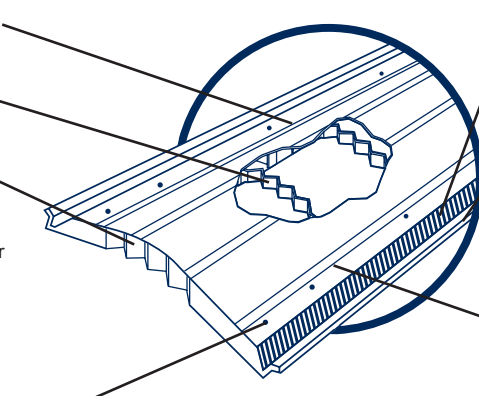
Imprinted Slot Guides. Make it easy to determine proper slot width and alignment.

Reinforced Internal Ribs. Add stability and strength.

Built-in Ventilating End Plug. Eliminates need for separate part. Easily adjusts for roof pitch, doesn't affect radius on vent so that cap shingles lay smooth over the vent to help prevent cap shingles from cracking.

Copolymer Resins. Molded from a copolymer formulation to remain flexible and easy to nail in all climates.

Limited Lifetime, Transferable Warranty. Provides peace of mind for the homeowner and installer.



18 Square Inches Net Free Area. Plus an external baffle to enhance airflow makes VenturiVent Plus a superbly effective product for attic ventilation.

External Baffle. Key to airflow performance, deflects wind and weather over the vent. Protects the attic from weather infiltration and creates low pressure over the vent to pull air out of the attic.

High Gloss Nailing Lines. For fast, accurate nailing of cap shingles.

Preformed to a 4/12 Pitch. Makes it easy to lay over the ridge. Can be used on 3/12 to 16/12 roof pitches.

Nail Holes Located at 16" and 24" Centers. Make it easier to locate and nail through a rafter.

Nail Bosses. Help eliminate over-nailing.

Research has shown that the best way to ventilate an attic is with a system that provides continuous airflow along the entire underside of the roof sheathing. Achieving this desired airflow requires a balanced system of intake ventilation low at the roof's edge or in the soffit/eaves and exhaust ventilation at the ridge. To achieve this balance, simply multiply the number of feet of VenturiVent Plus installed by 18 to calculate the exhaust net free area. Then install an equal amount of intake venting evenly distributed on all sides of the attic.

THE IDEAL SOLUTION: THE BALANCED SYSTEM® FOR ATTIC VENTILATION

Years of research have proven that Air Vent ridge vents, combined with balanced intake venting, are the most efficient and effective system you can install. This balanced system of intake and exhaust through the attic provides greater airflow than any other fixed vent. Compare ridge vents with other options and you'll agree ridge venting is the ideal solution.



42 Feet of Ridge Vent

Located precisely where they do the most good, at the peak of the roof, ridge vents are virtually invisible from ground level. And they provide greater airflow than other vents.



15 Roof Vents

In order to provide the same ventilation as 42 linear feet of ridge vent, 15 conventional roof vents would be necessary — creating quite an eyesore.



5 Wind Turbines

To provide the same ventilation as 42 linear feet of ridge vent, five wind turbines would be necessary — resulting in an unattractive roof line.

THE BENEFITS OF RIDGE VENTILATION



Air movement is the key to efficient ventilation to help eliminate damaging conditions in your attic. Ridge vents provide constant airflow along the entire underside of the roof to help remove heat and moisture.



Attic and roof temperatures can soar as high as 160 degrees in the summer. This over-heated air can damage roof structures and shingles, as well as increase cooling costs in the home. Ridge ventilation can create an airflow to remove this over-heated air.



Excess moisture can be as damaging as too much heat. In today's tightly constructed homes, moisture can accumulate in the attic causing mold, mildew and wood rot. Ridge vent systems work year-round to ventilate the attic.



Heat and moisture combine to damage shingles, trusses, rafters, roof deck and painted surfaces. Ridge ventilation can help extend the life of shingles and the roof structure.



Installing a ridge vent system will validate most manufacturers' shingle warranty requirements for ventilation.

VENTURIVENT PLUS features an external wind baffle that creates low air pressure above the ridge that actually "pulls" air from the attic and deflects wind-driven rain and snow.



Air enters attic through intake vents low at roof's edge or in the soffit/eaves.